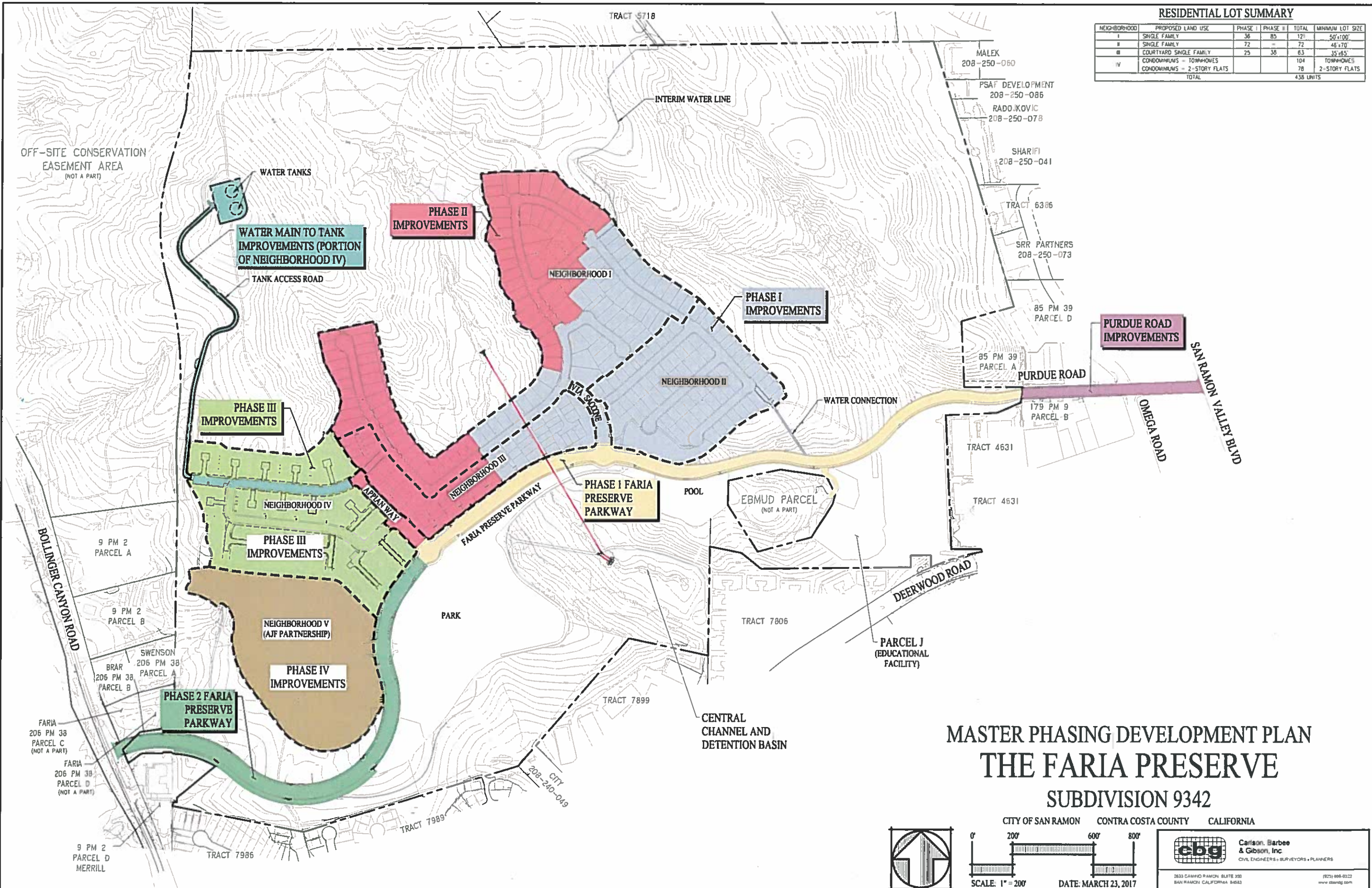


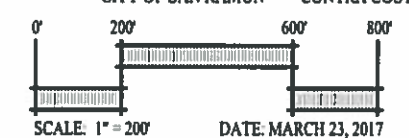
RESIDENTIAL LOT SUMMARY

NEIGHBORHOOD	PROPOSED LAND USE	PHASE I	PHASE II	TOTAL	MINIMUM LOT SIZE
I	SINGLE FAMILY	36	85	121	50'x100'
II	SINGLE FAMILY	72	-	72	46'x70'
III	COURTYARD SINGLE FAMILY	25	36	61	35'x55'
IV	CONDOMINIUMS - TOWNHOMES	-	-	104	TOWNHOMES
	CONDOMINIUMS - 2-STORY FLATS	-	-	78	2-STORY FLATS
				TOTAL	438 UNITS



**MASTER PHASING DEVELOPMENT PLAN
THE FARIA PRESERVE
SUBDIVISION 9342**

CITY OF SAN RAMON CONTRA COSTA COUNTY CALIFORNIA



cbg Carlson, Barbee & Gibson, Inc.
CIVIL ENGINEERS • SURVEYORS • PLANNERS
2833 CAMINO RAMON SUITE 300
SAN RAMON, CALIFORNIA 94583 (925) 886-6222
www.cbgsd.com